

Til Trafikstyrelsen

Udviklingselskabet By & Havn I/S
Nordre Toldbod 7
Postboks 2083
1013 København K

Tel. 3376 9800
Fax 3376 9801
www.byoghavn.dk
info@byoghavn.dk

CVR nr. 30823702

FULDMAGT

Udviklingselskabet By & Havn I/S, vil som administrator af vandarealer i Københavns havn hermed ansøge Trafikstyrelsen, om de nødvendige tilladelser til at etablere en brygge i havneløbet ud for kaj 48 i Københavns havn, i henhold til medfølgende tegninger.

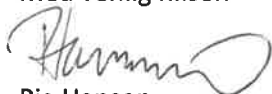
17. oktober 2022

PHA
PHA@byoghavn.dk

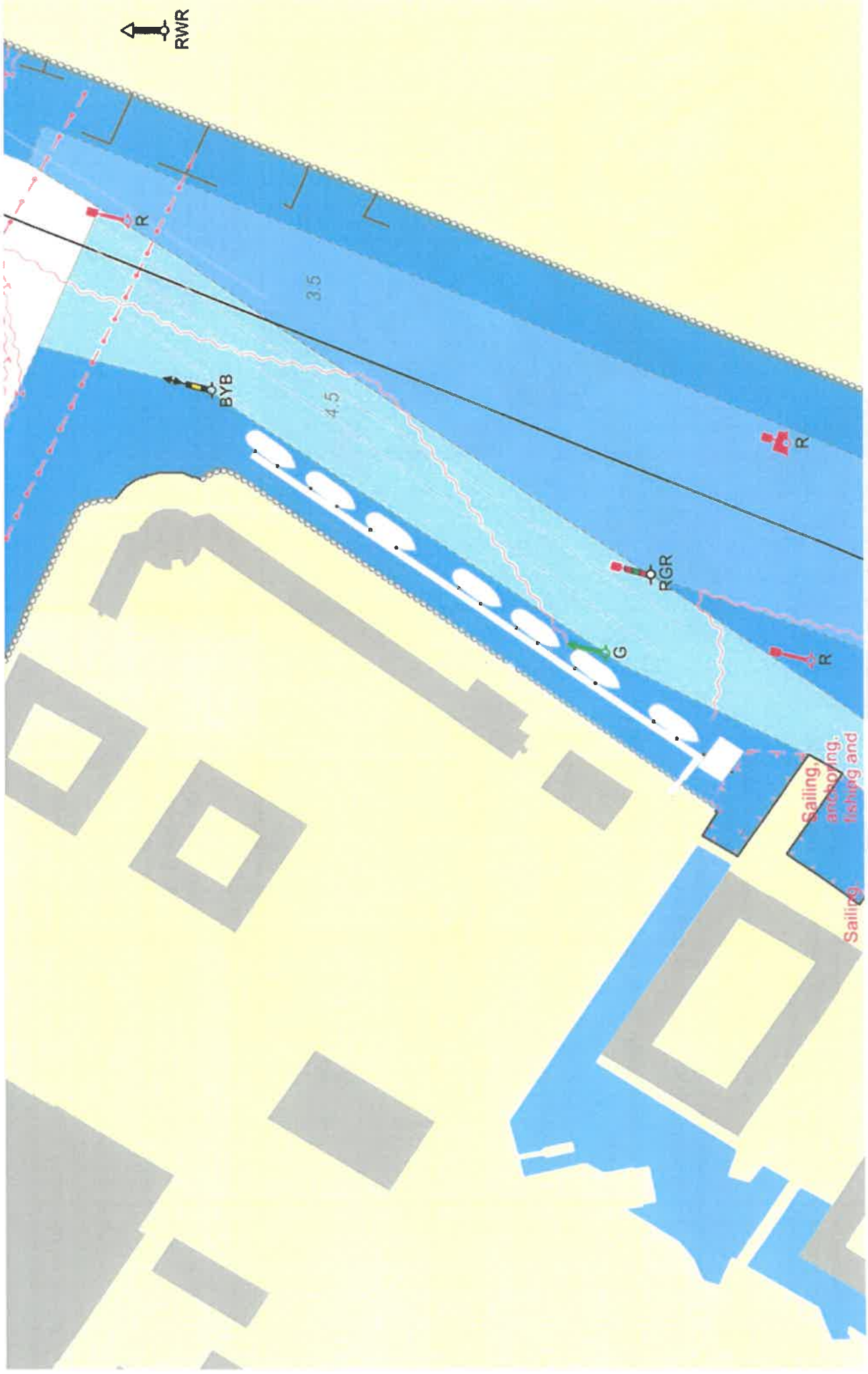
Bryggen skal benyttes til henlæggelse af husbåde.

Fuldmagten er gyldig indtil sagen er færdigbehandlet.

Med venlig hilsen

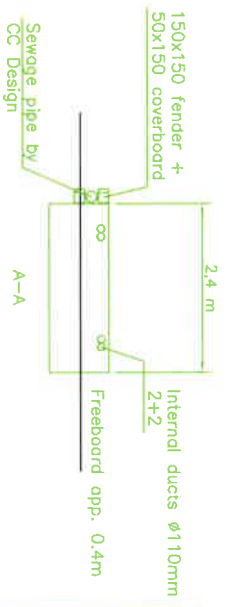
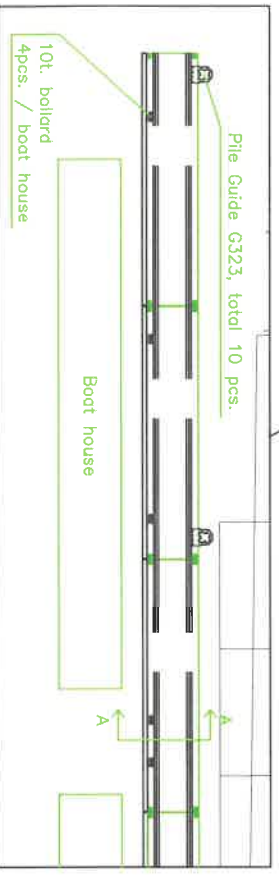
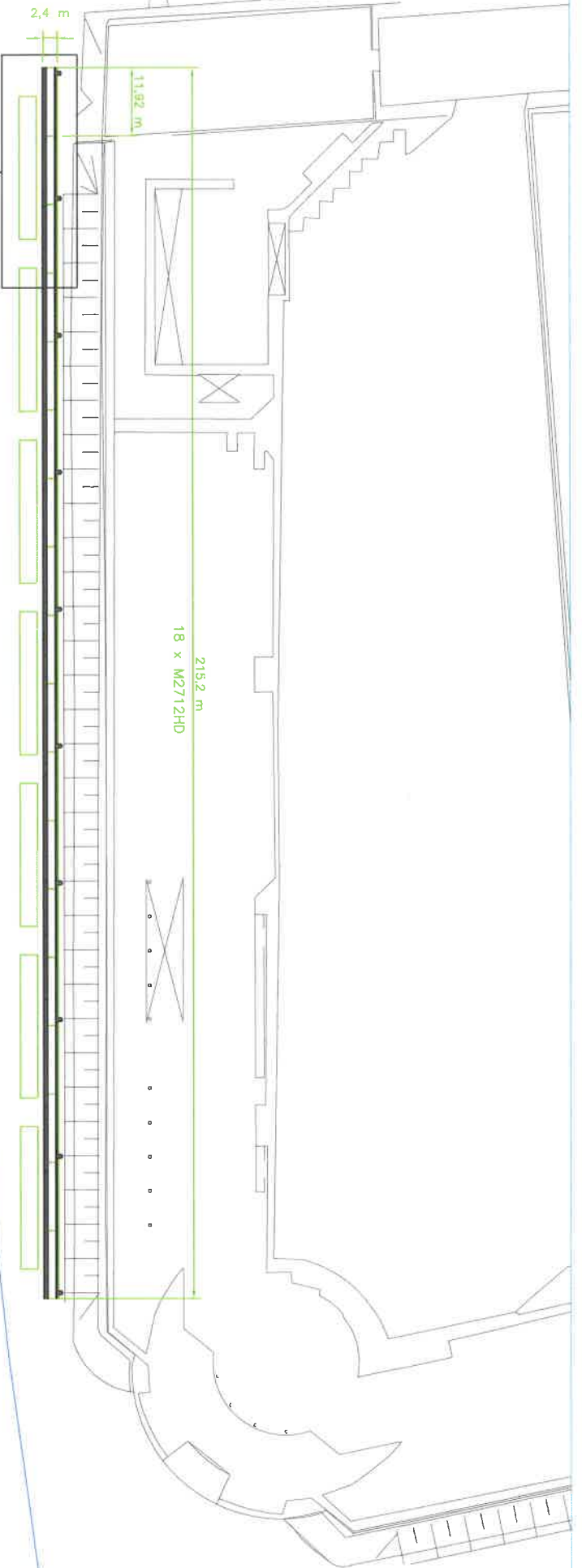


Pia Hansen
Kontorfuldmægtig



Projekt

Foreningens forslag til placering og udformning af anlægget er at sikre plads til min. 8 fartøjer plads. De lægges ved en flydebro der går langs stensætningen.



MARINETEK

Project: PROJECT

Title: TITLE

Drawing No: DRAWING-NO

Design: DESIGN

Scale: SCALE

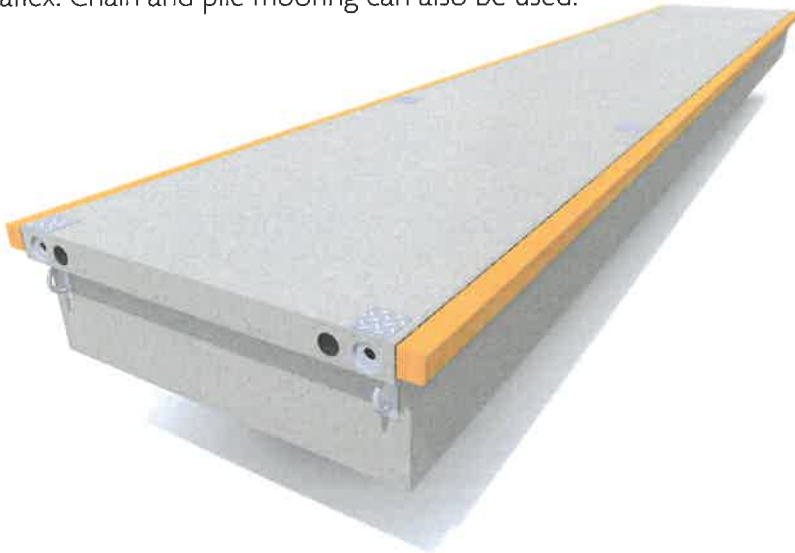
Approved by: APPROVAL_BY Date: APPROVAL_DATE

www.marinetek.net

The Product Information is given to the Customer only as guidance and shall be binding upon Marinetek only to the extent that it is by reference expressly included in the Contract. The measures and dimensions appearing in blueprints, drawings, schemes or other designs are not necessarily accurate or in scale and should therefore not be used as basis of any calculations by the Customer. Any blueprints, drawings, schemes or other designs produced or delivered by Marinetek relating to the Products are the sole property of Marinetek and may not be used or utilised without a prior written approval by Marinetek.

Heavy Duty pontoons 2700, 3300, 4300

The **Heavy Duty pontoons** have been designed for boat moorings in modern marinas, overpass bridges and landing stages. They are very strong and maintenance free with high loading capacity and long service life. The optional extras include e.g. cable ducts, fenders and fixing rails for fingers. It can be fitted up to 7,5 t bollards. The standard floats come in two widths and two lengths. All HD floats have been specifically designed to accommodate Marinetek Mooring System or Seaflex. Chain and pile mooring can also be used.



TECHNICAL DATA

Concrete strength: 45 N/mm² steel reinforced plastic fibre concrete.
Exposure class according to European EN 206-1 standard

Core: Expanded polystyrene, density 15 kg/m³

Reinforcement: Partly or fully hot dip galvanised steel

Optional accessories: Timber or wood composite deck, fixing rails, finger fixing system, cable ducts and fenders (timber or wood plastic composite)

FLOATS	M2712HD	M2715HD	M3312HD	M3315HD	M4312HD	M4315HD
Length (m)	11,92	14,92	11,92	14,92	11,92	14,92
Width with fenders (m)	2,7	2,7	3,3	3,3	4,3	4,3
Concrete width (m)	2,4	2,4	3,0	3,0	4,0	4,0
Height (m)	0,85	0,85	0,85	0,85	0,85	0,85
Weight (t)	10,7	13,4	12,2	15,2	15,5	19,4
Net capacity (kN/m ²)	4,7	4,7	5,0	5,0	5,0	5,0
Freeboard (m)	0,47	0,47	0,50	0,50	0,50	0,50
Strength of joint (kN)	2x322	2x322	2x322	2x322	2x322	2x322
Joint gap (mm)	35	35	35	35	35	35

Exact unit weight and freeboard are subject to detailed specification of the unit, equipment and mooring methods. Shown numbers are for standard and unloaded units.

Marinetek operates a policy of continuous development and reserves the right to change specifications without notice.

Modification date: 9.11.2016

MARINETEK GROUP OY

Vattuniemenkatu 3
FI-00210 Helsinki
www.marinetek.net

TEL. +358 (0)9 682 4100
FAX +358 (0)9 682 41030
EMAIL info@marinetek.net

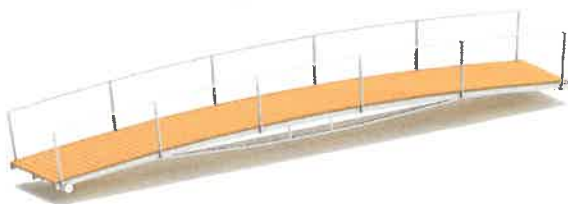
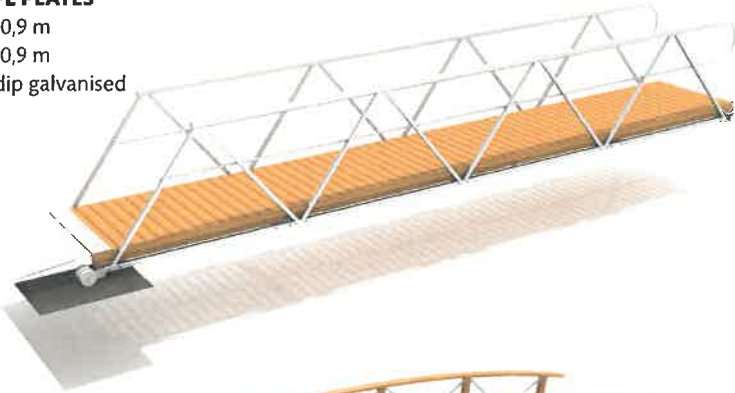


MARINETEK

Access Bridges

SLOPE PLATES

1,2 x 0,9 m
1,8 x 0,9 m
Hot dip galvanised steel.



WOODEN HINGED BRIDGES

1,3 x 4,0 m
1,3 x 5,0 m



STEEL BRIDGES (2,5 kN/m²)

1,2 x 6,0 m
1,2 x 8,0 m
1,2 x 10,0 m
1,2 x 12,0 m
1,8 x 6,0 m
1,8 x 8,0 m
1,8 x 10,0 m
1,8 x 12,0 m

Includes railings, wearing plastic plates and slope plate.
Hot dip galvanised steel frame.
Deck: Impregnated pine as standard and wood plastic composite as options.

WOODEN ARCH BRIDGES

1,2 x 5,0 m
Includes railings with rope interlacing and wearing plastic plates.
Also available without railings.

LIGHT STEEL BRIDGES

1,6 x 9,0 m
Hot dip galvanised steel frame.
Deck: Impregnated pine as standard and wood plastic composite as options.
Optional: railings

WOODEN BRIDGES

1,3 x 4,0 m
1,3 x 5,0 m
1,3 x 6,0 m
1,9 x 5,0 m
1,9 x 6,0 m
Includes wearing plastic plates.



BRIDGE SUPPORT FOR SHALLOW SEA BED

Deck level adjustable
Heights: 1 m, 1,5 m, 2,0 m, 2,5 m
Aluminium (sea water proof)

Marinetek operates a policy of continuous development and reserves the right to change specifications without notice.

Modification date: 9.11.2016

MARINETEK GROUP OY

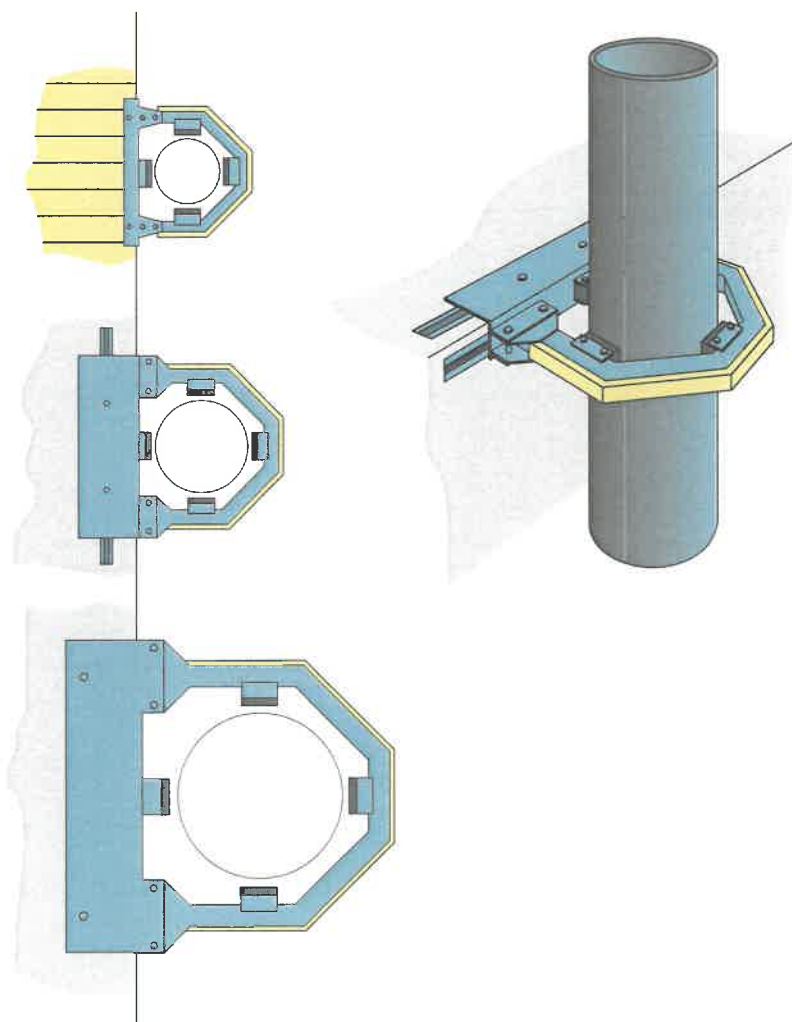
Vattuniemenkatu 3
FI-00210 Helsinki
www.marinetek.net

TEL. +358 (0)9 682 4100
FAX +358 (0)9 682 41030
EMAIL info@marinetek.net



Pile Guides

Marinetek standard **Pile Guides** have been designed for mooring all types of Marinetek pontoons and breakwaters. Every guide has a strong welded and hot dip galvanised steel structure, low friction polyethylene wearing blocks and wooden fendering.



TECHNICAL DATA

G200

The pile guide G200 has been designed for timber pontoons and for piles of 305-356 mm diameters. The design pile load is 20 kN.

G400

The pile guide G400 has been designed for Heavy Duty Pontoons and for piles of 406-508 mm diameters. The design pile load is 40 kN.

G700

The pile guide G700 is the strongest standard product and has been designed for biggest Heavy Duty Pontoons and Breakwaters and for piles of 762-920 mm diameters. The design load is 70 kN.

In addition to the standard sizes, units of special dimensions are also available.

Marinetek operates a policy of continuous development and reserves the right to change specifications without notice.

Revision date: 15.01.2008

MARINETEK GROUP

Vattuniemenkatu 3
FI-00210 Helsinki, Finland
WEB www.marinetek.net

TEL. +358 (0)9 682 4100
FAX +358 (0)9 682 41030
EMAIL info@marinetek.net



MARINETEK
More than Surface



Den parallelle løsning vil passe til hovedbygningens placering. Samtidig skal der være god afstand imellem fartøjerne og dermed sikre en god udsigt ud over Inderhavnen og over mod Fælledén, for ansatte og besøgende. Endvidere vil dette gøre, at fartøjerne ses bedst for betragtere på land.

Anlæg



Adgangsforhold til anlæg

Da havnekanten er bestået af en sfensætning, der skræner ned til vandet, er adgangen til flydebroen placeret i det sydligste punkt på broen. Der er altså ingen trafik til og fra skibene over sfensætningen.